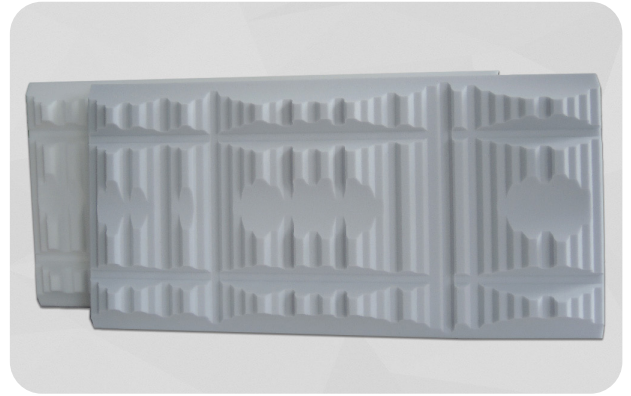


soni PROTECT Art

- ▶ **soni PROTECT Art** is a highly efficient acoustic panel made of an open-cell melamine foam (Basotect). The sound absorber **soni PROTECT Art** convinces with exceptionally good absorption properties and a visually very appealing design. The relief-like surface offers an enlarged absorber area and thus improves the room acoustics enormously.
- ▶ With edge-to-edge installation or combined with our **soni PROTECT** panels, unique stylish and visually appealing wall motifs can be created. **soni PROTECT Art** combines a sophisticated look with effective sound reduction.

*Basotect® is a registered trademark of BASF SE



TECHNICAL DATA

FLAMMABILITY MELAMINE FOAM

- ▶ DIN 4102, tested according to B1 (flame-retardant)
- ▶ DIN EN 13501-1: C-S2, d0 (NK)
- ▶ Fulfills the strict fire safety standard for the automotive industry (FMVSS 302, DIN 75 200)
- ▶ ISO 3795, burning rate < 100 mm/min

TEMPERATURE RESISTANCE MELAMINE FOAM

- ▶ Long-term: -50°C to +180°C, short-term up to +200°C

THERMAL CONDUCTIVITY MELAMINE FOAM / EN 12667

- ▶ ≤ 0.034 W/(m·K) at 10°C (comparable to Styrofoam acc. to WLG 035)

DIMENSIONS

PRODUCT	THICKNESS / TOLERANCE [mm]	SHEET / TOLERANCE [mm]	WEIGHT PER SHEET
PROTECT ART	Highest Point 70 ± 1	1000 X 500 ± 5	200 g

ADVICE

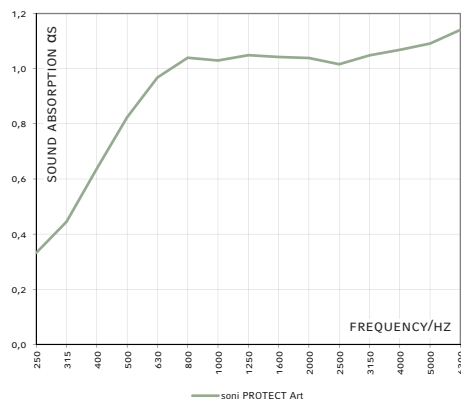
- ▶ For this material, fluctuations in air humidity can lead to dimensional variations beyond the indicated dimension tolerances.
- ▶ soni PROTECT Art is in grey and white available.

BENEFITS

- ▶ High sound absorption values
- ▶ Optimized room acoustics
- ▶ Excellent flammability characteristics (B1 fulfilled)
- ▶ High ageing stability
- ▶ Free of mineral fibers, physiologically safe
- ▶ VOC-emission class as tested with ISO 16000: product has been assigned class A (white)

REVERBERATION ROOM

- ▶ Based on DIN EN ISO 354



APPLICATIONS

- ▶ **soni PROTECT Art** reduce the sound level in a room and help improve the acoustic conditions in interior spaces.
- ▶ **soni PROTECT Art**-sheets can easily be cut to the desired size with a carpet knife. For fixing the absorber panels on the wall or ceiling we recommend our soni SPECIAL ADHESIVE.



PLEASE SEE OUR PROCESSING AND STORAGE INSTRUCTIONS

Details and values given in this leaflet are average values and have been compiled with care. They are not binding, however, and Cellofoam International GmbH & Co. KG disclaims any liability for any damages and detriments, also in connection with any third party's rights. The information given does not release the buyers from making the necessary experiments and tests themselves. Subject to technical changes. For updates please go to our website.

Cellofoam International GmbH & Co. KG
Business unit soniflex
P: +49 7351 340 28 61
sales@soniflex.de / www.soniflex.de

VERSION 12/21

Distribution partner for Switzerland:
soniflex Switzerland
P: +41 44 377 60 50
einkauf@soniflex.ch / www.soniflex.ch

AIR POCKET TOLERANCES

▶ When melamine foam is produced, air pockets may form that become visible later on when the foam block is cut into sheets. The following tolerances apply for such air pockets:

Face side / edges: Ø up to 5 mm: no restrictions
Ø 5-15 mm: a maximum of 10 per piece
Ø 15-25 mm: a maximum of 1 per piece
Rear face: no restrictions as to size and number